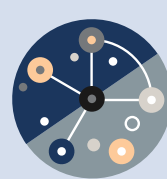


The difference between unified and integrated physical security systems



Unified

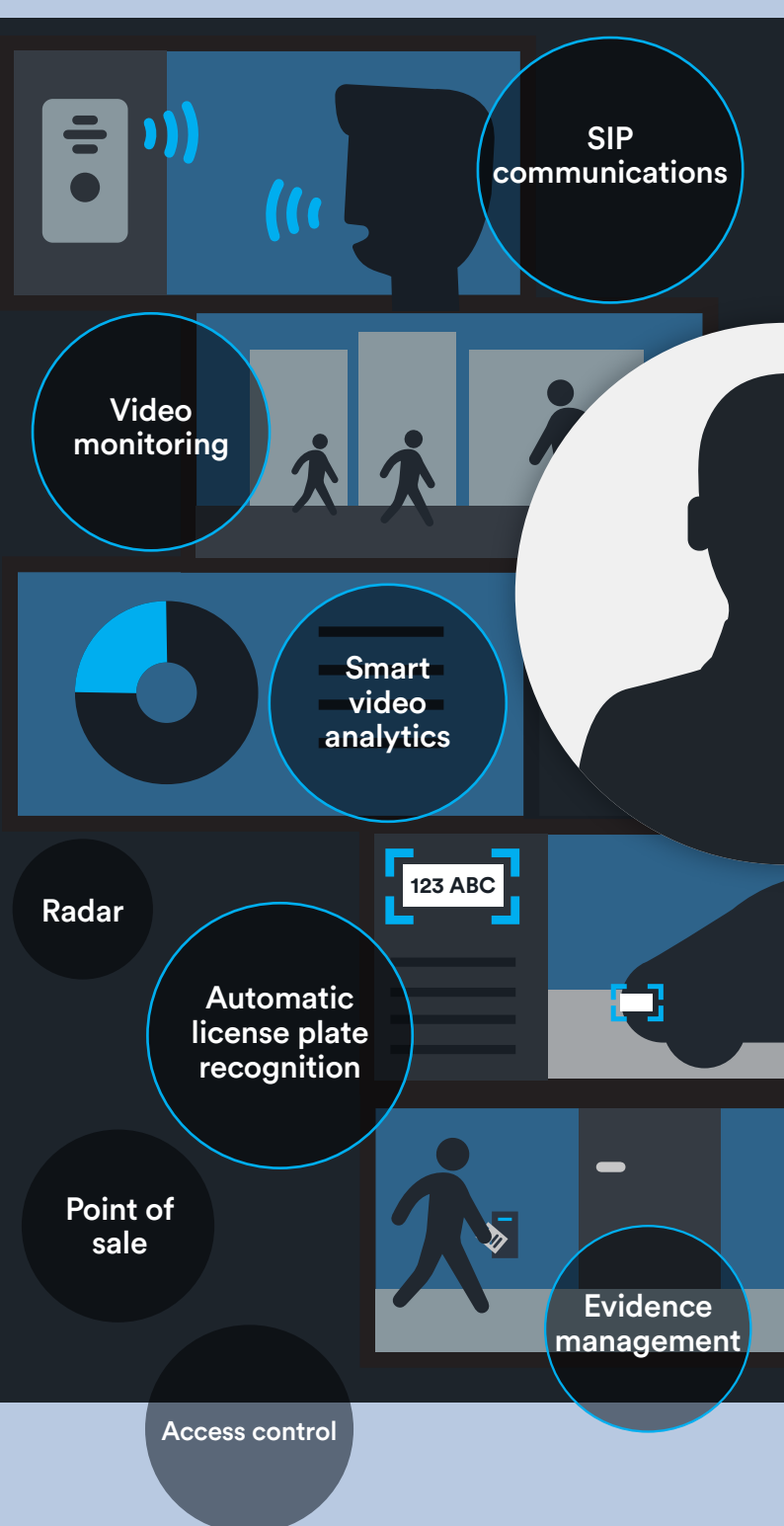


Integrated

WHAT IS IT?

A platform that brings all security applications seamlessly together in **one single interface**

The result of combining multiple standalone **systems and connecting them together**



HOW DOES IT WORK?

A unified system is designed to address **a broad range of security tasks**. Native and third-party data sources coexist transparently, and the system scales seamlessly as new technologies are added.

An integrated system is made up of **independent solutions from multiple vendors, all combined in a host solution**. Because the host was designed for a specific technology, new data sources are tacked on an interface built for a limited set of tasks.

WHAT'S THE BOTTOM LINE?

A unified system **enables the flow of data across security activities and operations**. You can also easily add new security technology and sensors through an ecosystem of partners. This ensures the system can grow with you and adapt to your evolving needs.

An integrated system is made up of **many independent connections**. This makes consolidating large amounts of data time-consuming. And because each solution was designed for a single set of activities it can be difficult to expand applications and add new technology.

Ready to get on the path to better security?

[Get started](#)

Genetec™

Sensorlink

Malaysia authorised distributor

www.sensorlink.com.my
marketing@sensorlink.com.my